

Description: 1003 GPS & 2.4GHz Chip Antenna

PART NUMBER: ANT1003LL15R1524A

Features:

- Size : 9.90x3.20x1.47 mm
- Cover dual frequency bands in 2.4 & 1.575 GHz
- Omni-directional Radiation
- Tape & reel automatic mounting
- Reflow process compatible
- RoHS compliant

Applications:

- Tablet
- Navigation device
- Telematics box
- Fleet management
- 2.4 GHz WiFi device
- Bluetooth gadget
- Zigbee device
- ISM band equipment

ELECTRICAL SPECIFICATIONS

Working Frequency	1.575 GHz / 2.45 GHz
Bandwidth	15 MHz(Typ.) / 84 MHz (Typ.)
Gain	6.49 dBi Min.
Polarization	Linear
Azimuth Beamwidth	Omni-directional
Impedance	1.15 dBi / 2.90 dBi
Operating Temperature	50 Ω
Maximum Power	- 40~105 °C
Termination	1 W
Resistance to Soldering Heats	Ni / Sn (Environmentally-Friendly Leadless)
	260°C , 10sec.

NOTE

1. The specification is defined on Pulse evaluation board

In the effort to improve our products, we reserve the right to make changes judged to be necessary.

CONFIDENTIAL AND PROPRIETARY INFORMATION

This document contains confidential and proprietary information of Pulse Electronics, Inc. (Pulse) and is protected by copyright, trade secret and other state and federal laws. Its receipt or possession does not convey any rights to reproduce, disclose its contents, or to manufacture, use or sell anything it may describe. Reproduction, disclosure or use without specific written authorization of Pulse is strictly forbidden.

For more information:



Pulse Worldwide Headquarters
 15255 Innovation Drive #100
 San Diego, CA 92128
 USA
 Tel: 1-858-674-8100

Pulse/Larsen Antennas
 18110 SE 34th St Bldg 2 Suite 250
 Vancouver, WA 98683
 USA
 Tel: 1-360-944-7551

Europe Headquarters
 Pulse GmbH & Co, KG
 Zeppelinstrasse 15
 Herrenberg, Germany
 Tel: 49 7032 7806 0

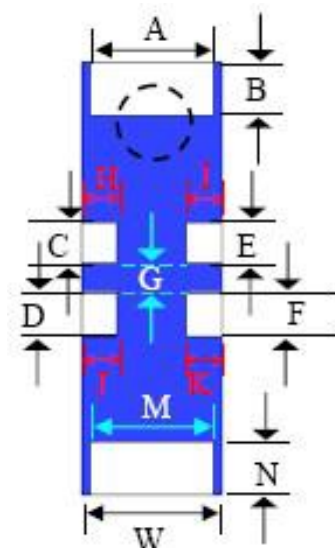
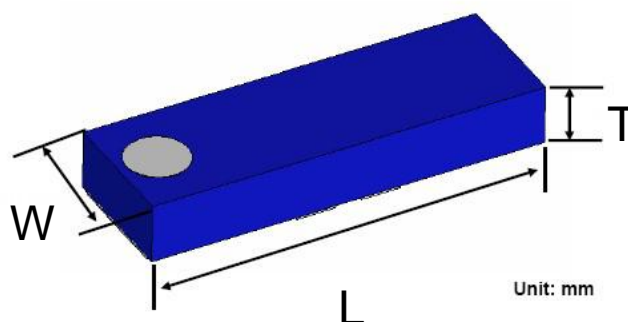
Pulse (Suzhou) Wireless Products Co, Inc.
 99 Huo Ju Road(#29 Bldg, 4th Phase
 Suzhou New District
 Jiangsu Province, Suzhou 215009 PR China
 Tel: 86 512 6807 9998

Description: 1003 GPS & 2.4GHz Chip Antenna

PART NUMBER: ANT1003LL15R1524A

MECHANICAL DRAWING

	Dimension
L (mm)	9.90 ± 0.15
W (mm)	3.20 ± 0.15
T (mm)	1.47 ± 0.15
A (mm)	2.81 ± 0.15
B (mm)	1.23 ± 0.15
C (mm)	1.03 ± 0.15
D (mm)	1.03 ± 0.15
E (mm)	1.03 ± 0.15
F (mm)	1.03 ± 0.15
G (mm)	0.60 ± 0.15
H (mm)	0.83 ± 0.15
I (mm)	0.83 ± 0.15
J (mm)	0.83 ± 0.15
K (mm)	0.83 ± 0.15
L (mm)	0.83 ± 0.15
M (mm)	2.81 ± 0.15
n (mm)	1.23 ± 0.15



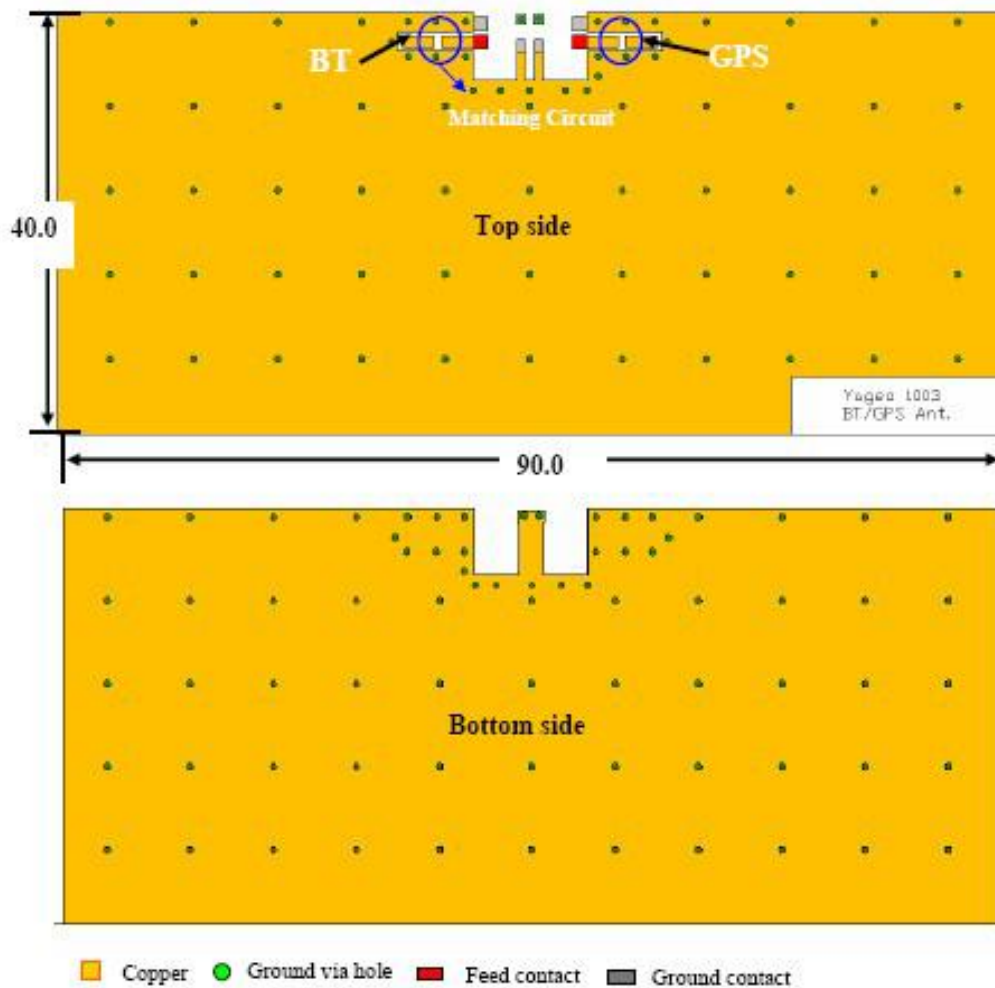
Terminal name	Function
A	Feed BT / GND
B	Feed BT / GND
C	GND
D	GND
E	GND
F	GND

Terminal name	Function
H	GND
I	GND
J	GND
K	GND
M	Feed GPS / GND
N	Feed GPS / GND

Description: 1003 GPS & 2.4GHz Chip Antenna

PART NUMBER: ANT1003LL15R1524A

REFERENCE DESIGN OF EVALUATION BOARD



Unit: mm

Outlook and dimension of evaluation board

In the effort to improve our products, we reserve the right to make changes judged to be necessary.

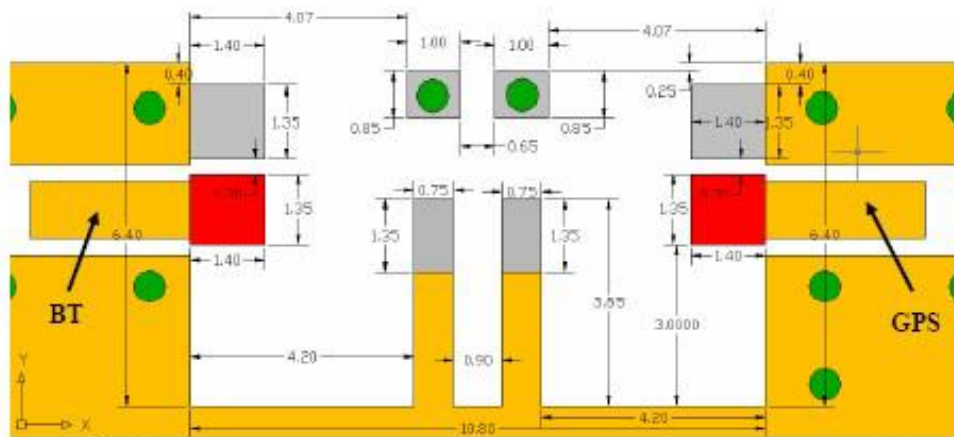
CONFIDENTIAL AND PROPRIETARY INFORMATION

This document contains confidential and proprietary information of Pulse Electronics, Inc. (Pulse) and is protected by copyright, trade secret and other state and federal laws. Its receipt or possession does not convey any rights to reproduce, disclose its contents, or to manufacture, use or sell anything it may describe. Reproduction, disclosure or use without specific written authorization of Pulse is strictly forbidden.

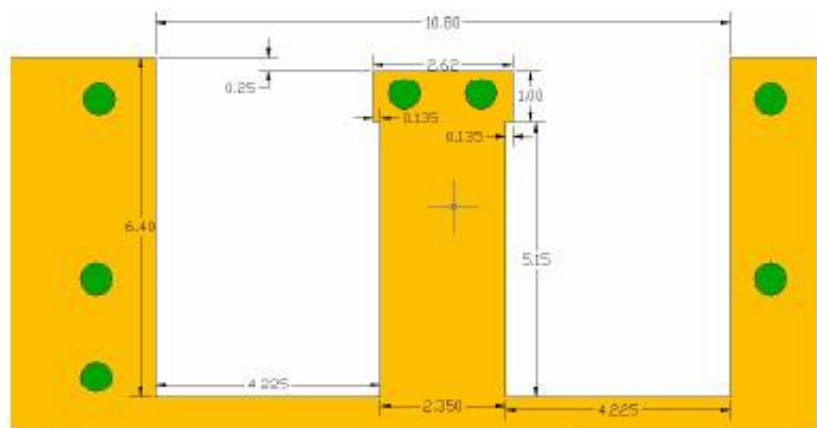
Description: 1003 GPS & 2.4GHz Chip Antenna

PART NUMBER: ANT1003LL15R1524A

REFERENCE DESIGN OF EVALUATION BOARD



Top side



Bottom side

■ Copper
 ● Ground via hole
 ■ Feed contact
 ■ Ground contact

Tol : ± 0.1
Unit: mm

Details of soldering Pad

In the effort to improve our products, we reserve the right to make changes judged to be necessary.

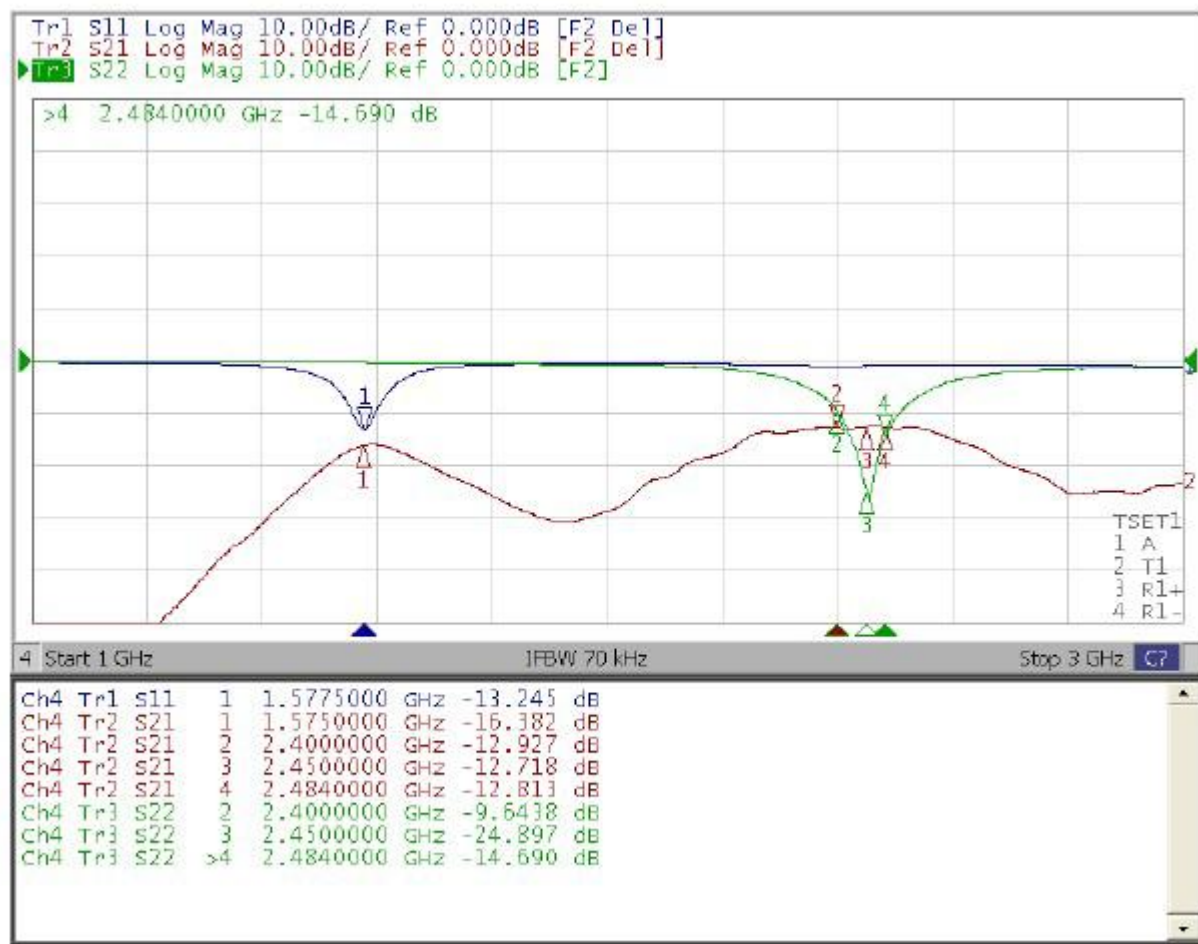
CONFIDENTIAL AND PROPRIETARY INFORMATION

This document contains confidential and proprietary information of Pulse Electronics, Inc. (Pulse) and is protected by copyright, trade secret and other state and federal laws. Its receipt or possession does not convey any rights to reproduce, disclose its contents, or to manufacture, use or sell anything it may describe. Reproduction, disclosure or use without specific written authorization of Pulse is strictly forbidden.

Description: 1003 GPS & 2.4GHz Chip Antenna

PART NUMBER: ANT1003LL15R1524A

ELECTRICAL PERFORMANCES



Return loss

In the effort to improve our products, we reserve the right to make changes judged to be necessary.

CONFIDENTIAL AND PROPRIETARY INFORMATION

This document contains confidential and proprietary information of Pulse Electronics, Inc. (Pulse) and is protected by copyright, trade secret and other state and federal laws. Its receipt or possession does not convey any rights to reproduce, disclose its contents, or to manufacture, use or sell anything it may describe. Reproduction, disclosure or use without specific written authorization of Pulse is strictly forbidden.

Description: 1003 GPS & 2.4GHz Chip Antenna

PART NUMBER: ANT1003LL15R1524A

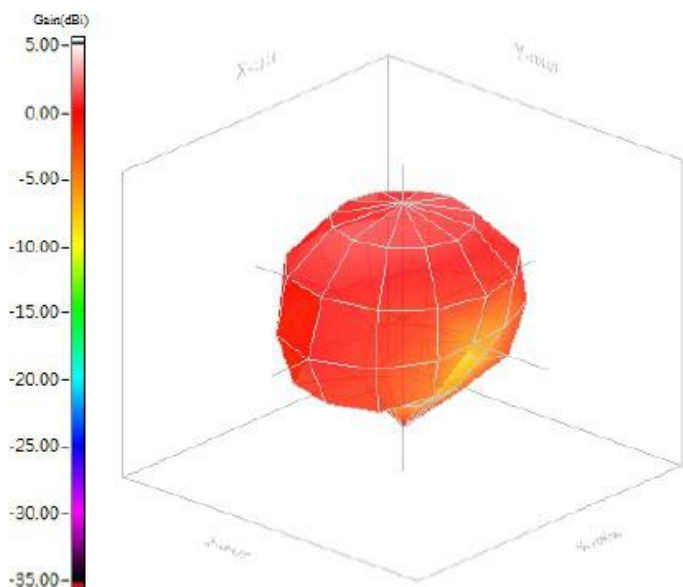
ELECTRICAL PERFORMANCES

Radiation Pattern_1.575z GHz

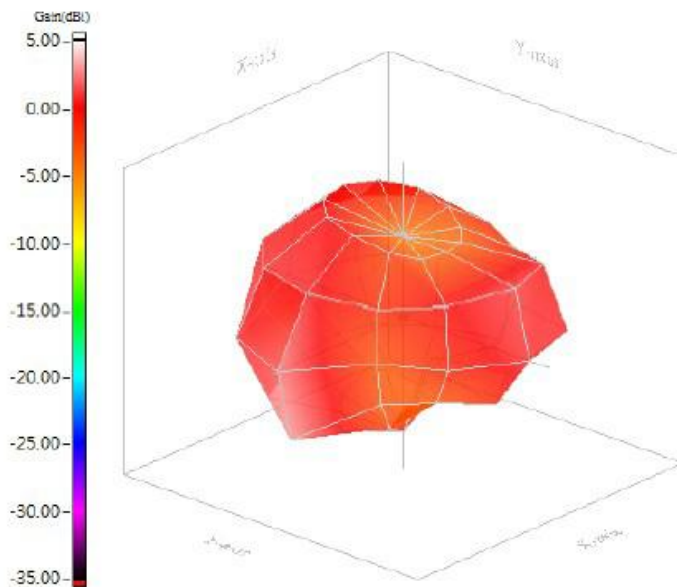
Radiation Pzzattern_2.45 GHz

Model name 1003 GPS	Test mode 3D
Test frequency / Polarization 1575.00 MHz / Vector sum	Test date 2011/12/15

Model name 1003 BT	Test mode 3D
Test frequency / Polarization 2450.00 MHz / Vector sum	Test date 2011/12/15



Max gain= 1.15dBi, at (0, 0)
MEG(mean effective gain)= -0.79dBi
Directivity(dB)= 2.90
Efficiency= -1.75dB, 66.83%



Max gain= 2.90dBi, at (120, 0)
MEG(mean effective gain)= -1.41dBi
Directivity(dB)= 3.79
Efficiency= -0.89dB, 81.55%

Radiation pattern

Description: 1003 GPS & 2.4GHz Chip Antenna

PART NUMBER: ANT1003LL15R1524A

REVISION HISTORY

Revision	Date	Description
Version 1	Nov. 19, 2020	- New issue