

**Description:** 7020 915MHz Chip Antenna

**PART NUMBER:** ANT7020LL05R0915A

### Features:

- Size : 7.00x2.05x0.78 mm
- Omni-directional radiation
- Tape & reel automatic mounting
- Reflow process compatible
- RoHS compliant



### Applications:

- Smart meter
- Industrial remote control
- ISM band equipment

In the effort to improve our products, we reserve the right to make changes judged to be necessary.

CONFIDENTIAL AND PROPRIETARY INFORMATION

This document contains confidential and proprietary information of Pulse Electronics, Inc. (Pulse) and is protected by copyright, trade secret and other state and federal laws. Its receipt or possession does not convey any rights to reproduce, disclose its contents, or to manufacture, use or sell anything it may describe. Reproduction, disclosure or use without specific written authorization of Pulse is strictly forbidden.

For more information:



Pulse Worldwide Headquarters  
15255 Innovation Drive #100  
San Diego, CA 92128  
USA  
Tel: 1-858-674-8100

Pulse/Larsen Antennas  
18110 SE 34<sup>th</sup> St Bldg 2 Suite 250  
Vancouver, WA 98683  
USA  
Tel: 1-360-944-7551

Europe Headquarters  
Pulse GmbH & Do, KG  
Zeppelinstrasse 15  
Herrenberg, Germany  
Tel: 49 7032 7806 0

Pulse (Suzhou) Wireless Products Co, Inc.  
99 Huo Ju Road(#29 Bldg,4<sup>th</sup> Phase  
Suzhou New District  
Jiangsu Province, Suzhou 215009 PR China  
Tel: 86 512 6807 9998

**Description: 7020 915MHz Chip Antenna**

**PART NUMBER: ANT7020LL05R0915A**

**ELECTRICAL SPECIFICATIONS**

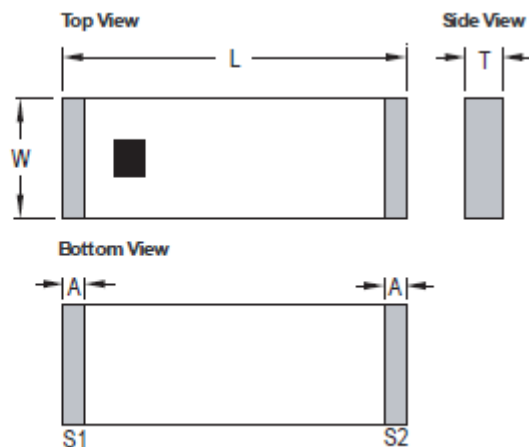
<b>Working Frequency</b>	915 MHz
<b>Bandwidth</b>	60 MHz(Typ.)
<b>Return Loss</b>	10 dB Min.
<b>Polarization</b>	Linear
<b>Antenna Directivity</b>	Omni-directional
<b>Peak Gain</b>	2.5 dBi(Typ.)
<b>Impedance</b>	50 Ω
<b>Operating Temperature</b>	- 40~105 °C
<b>Maximum Power</b>	1 W
<b>Termination</b>	Ni / Sn (Environmentally-Friendly Leadless)
<b>Resistance to Soldering Heats</b>	260°C , 10sec.

NOTE

1. The specification is defined on Pulse evaluation board

**MECHANICAL DRAWING**

	<b>Dimension</b>
L (mm)	7.00 ±0.20
W (mm)	2.05 ±0.20
T (mm)	0.78 ±0.20
A (mm)	0.45 ±0.20



YNH0013

<b>Terminal name</b>	<b>Function</b>
S1	Feeding Point
S2	Soldering Point

In the effort to improve our products, we reserve the right to make changes judged to be necessary.

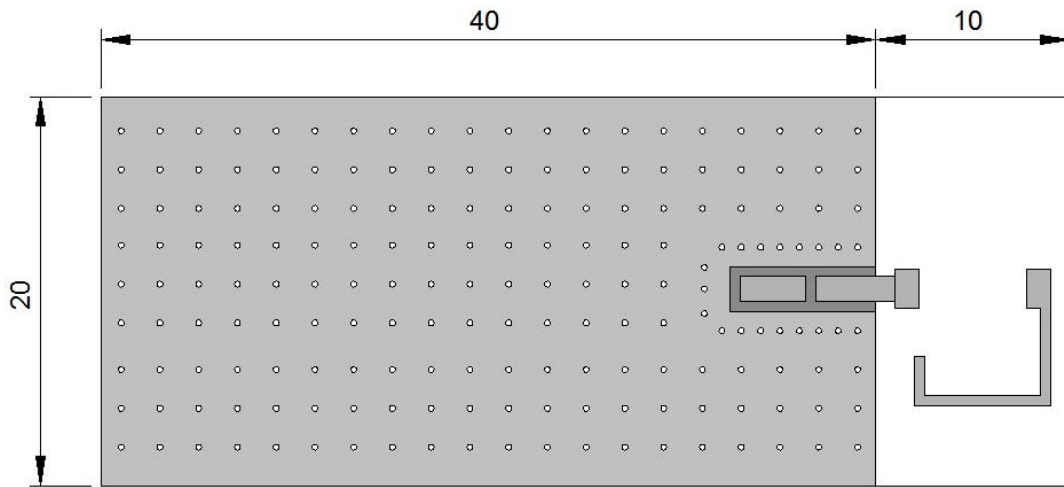
CONFIDENTIAL AND PROPRIETARY INFORMATION

This document contains confidential and proprietary information of Pulse Electronics, Inc. (Pulse) and is protected by copyright, trade secret and other state and federal laws. Its receipt or possession does not convey any rights to reproduce, disclose its contents, or to manufacture, use or sell anything it may describe. Reproduction, disclosure or use without specific written authorization of Pulse is strictly forbidden.

**Description:** 7020 915MHz Chip Antenna

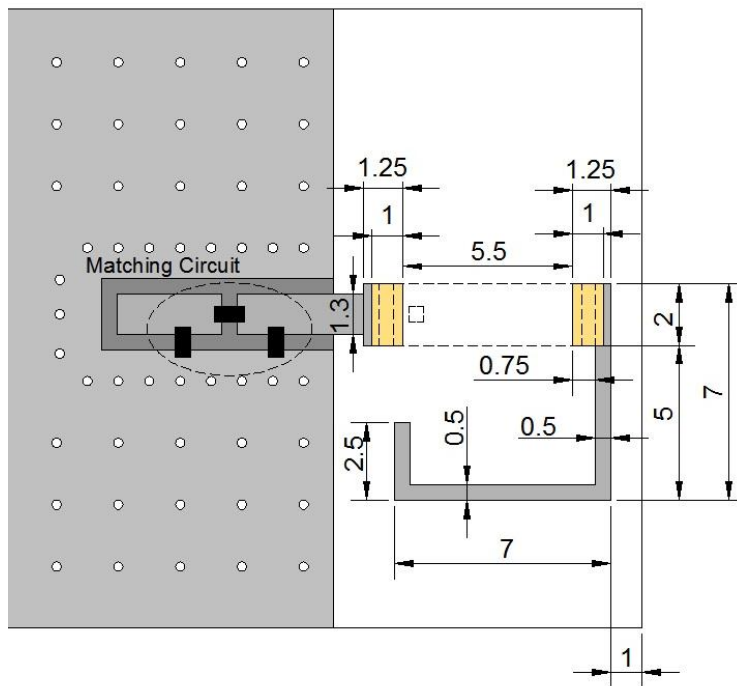
**PART NUMBER:** ANT7020LL05R0915A

**REFERENCE DESIGN OF EVALUATION BOARD**



Unit : mm

Outlook and dimension of evaluation board



- : Top Layer
  - : Bottom Layer
  - : Land Pattern
- Unit : mm

Details of soldering Pad

In the effort to improve our products, we reserve the right to make changes judged to be necessary.

CONFIDENTIAL AND PROPRIETARY INFORMATION

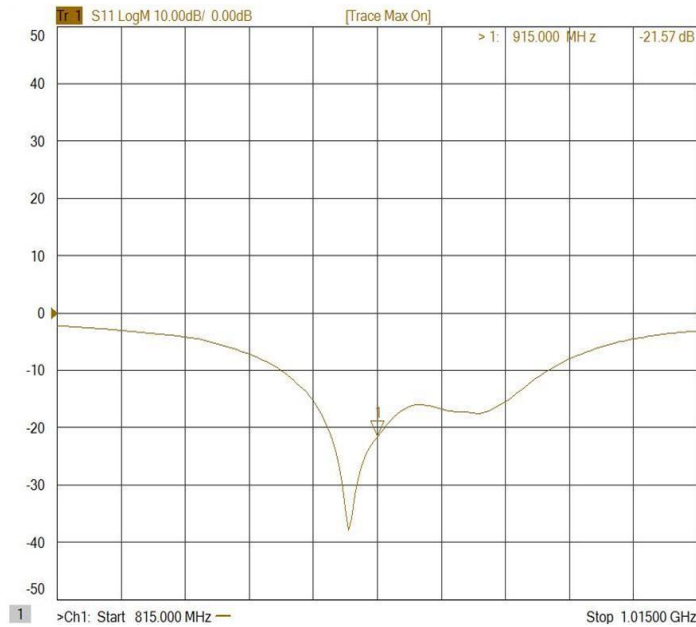
This document contains confidential and proprietary information of Pulse Electronics, Inc. (Pulse) and is protected by copyright, trade secret and other state and federal laws.

Its receipt or possession does not convey any rights to reproduce, disclose its contents, or to manufacture, use or sell anything it may describe. Reproduction, disclosure or use without specific written authorization of Pulse is strictly forbidden.

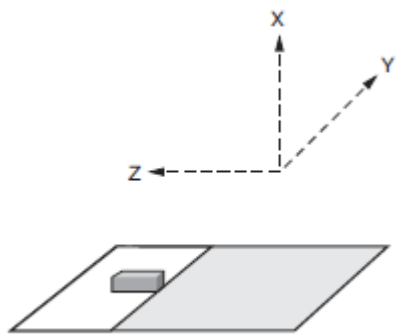
**Description: 7020 915MHz Chip Antenna**

**PART NUMBER: ANT7020LL05R0915A**

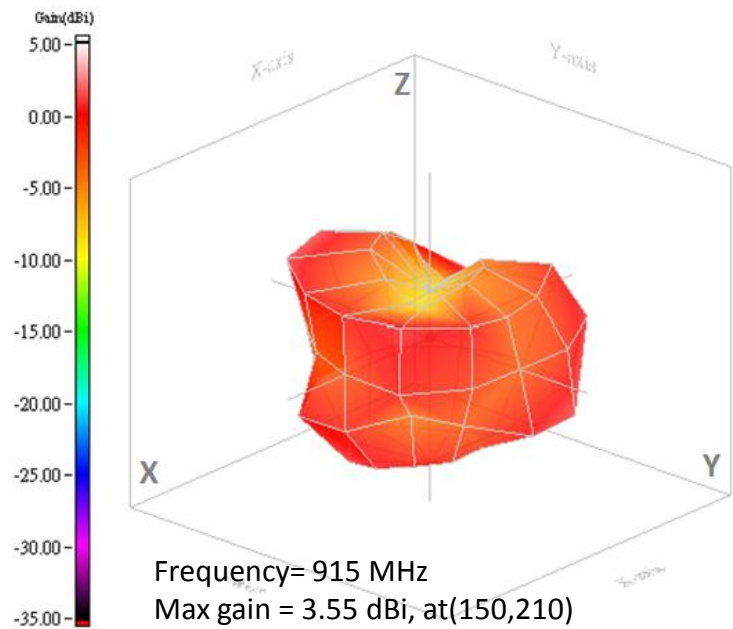
**ELECTRICAL PERFORMANCES**



Return loss



Evaluation board and XYZ direction



Frequency= 915 MHz  
 Max gain = 3.55 dBi, at(150,210)  
 Directivity (dB) = 4.55  
 Efficiency = -1.00 dB, 79.48%

Radiation pattern

In the effort to improve our products, we reserve the right to make changes judged to be necessary.

CONFIDENTIAL AND PROPRIETARY INFORMATION

This document contains confidential and proprietary information of Pulse Electronics, Inc. (Pulse) and is protected by copyright, trade secret and other state and federal laws. Its receipt or possession does not convey any rights to reproduce, disclose its contents, or to manufacture, use or sell anything it may describe. Reproduction, disclosure or use without specific written authorization of Pulse is strictly forbidden.

**Description:** 7020 915MHz Chip Antenna

**PART NUMBER:** ANT7020LL05R0915A

### REVISION HISTORY

Revision	Date	Description
Version 1	Nov. 4, 2020	- New issue

In the effort to improve our products, we reserve the right to make changes judged to be necessary.

CONFIDENTIAL AND PROPRIETARY INFORMATION

This document contains confidential and proprietary information of Pulse Electronics, Inc. (Pulse) and is protected by copyright, trade secret and other state and federal laws. Its receipt or possession does not convey any rights to reproduce, disclose its contents, or to manufacture, use or sell anything it may describe. Reproduction, disclosure or use without specific written authorization of Pulse is strictly forbidden.