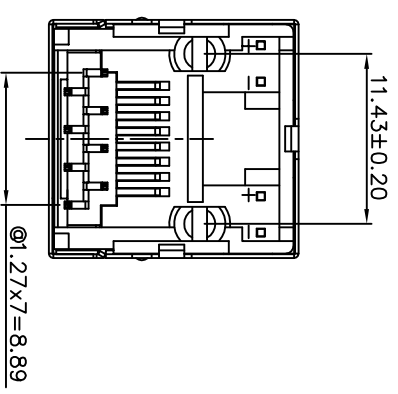
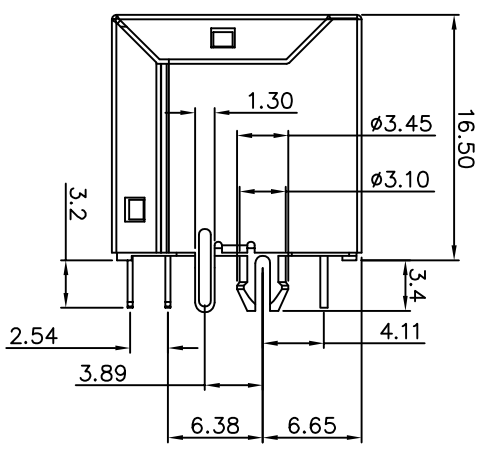
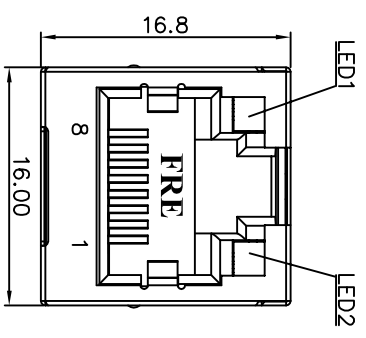


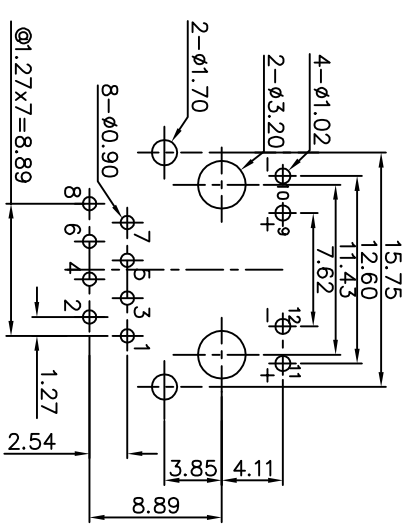
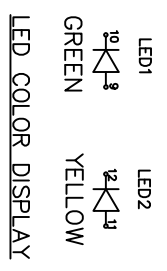
REVISION RECORD	
REV	DESCRIPTION
	DRFT



- NOTES:**
- ELECTRICAL:**
- VOLTAGE RATING : 125 VAC RMS.
 - CURRENT RATING : 1.5 AMP.
 - CONTACT RESISTANCE : 40 MILLIOHMS MAX.
 - INSULATION RESISTANCE: 1000 MEGOHMS MIN. @ 500 VDC.
 - DIELECTRIC STRENGTH : 1000 VDC RMS 60Hz, 1MIN.
 - LED RATINGS: FORWARD VOLTAGE: 2.2 VOLTS TYPICAL
REVERSE VOLTAGE: 5 VOLTS MAXIMUM.

- MECHANICAL:**
- SHIELD MATERIAL : COPPER ALLOY PLATING NI
 - HOUSING MATERIAL : FR50 UL94V-0
 - HOUSING COLOR : BLACK
 - CONTACT MATERIAL : PHOSPHOR BRONZE t=0.35mm.
 - PLATING : GOLD PLATING OVER NICKEL.
 - OPERATING LIFE : 750 CYCLES MIN.
 - PCB RETENTION PRE-SOLDER : 1 LB MIN.
 - PCB RETENTION POST-SOLDER : 10 LBS MIN.

- ENVIRONMENTAL:**
- STORAGE : -40°C TO +85°C.
 - OPERATION: -40°C TO +85°C.
 - WAVE SOLDER TEMPERATURE: 255°C ~ 265°C.
5~10 SECONDS
- MATES WITH MODULAR PLUG CONFORMING TO
FCC PART 68, SUBPART F.
CUL FILE NO. E163191



PC BOARD LAYOUT T=1.60mm
COMPONENT SIDE SHOWN
TOLERANCES±0.05mm

DETACHED LISTS		MM (INCH)	
MM	INCH	TOLERANCES EXCEPT AS NOTED	
0 ± 0.25	±		
.00 ± 0.20	±		
.000 ± 0.10	±		
ANGLES ± 1°			
THIRD ANGLE PROJECTION			
TITLE		RoHS Compliant	
R445 TOP ENTRY PCB JACK(W/LED)		Pulse Electronics	
DFTO : KURT	DRAWING NO. CE5288-XX0XX-L	DO NOT SCALE DRAWING	SHEET 1 OF 1
DATE : 06/27/2012	/PART NO. E5288-3A0C02-L		
SCALE : 1.5:1			
PART NO. E5288-3A0C02-L		SHIELD PLATING	NICKEL
PART NO.		FRE LOGO	W/
		Au PLATING	6U*