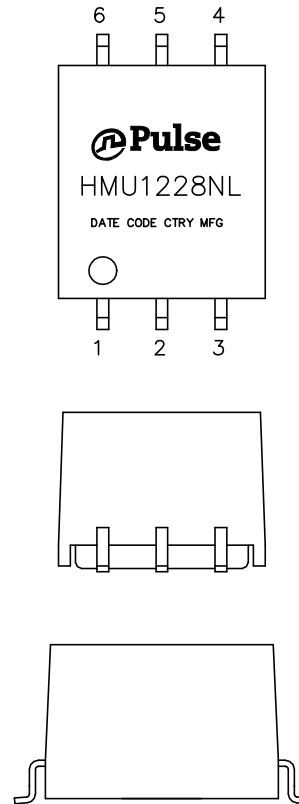




NOTES:

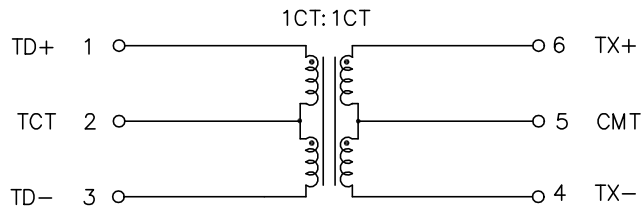
1. ROHS COMPLIANT
2. STORAGE TEMPERATURE: -50°C TO +125°C
3. COMPLIANCE TO J-STD:
  - A. J-STD-002: SOLDERABILITY AT 245°C REFLOW PROFILE
  - B. J-STD-020: LEVEL 1, NO MOISTURE SENSITIVE
  - C. J-STD-075: R7, 245°C MAXIMUM THROUGH REFLOW SOLDER
4. TO ORDER TAPE & REEL PACKAGING ADD A "T" SUFFIX TO THE PART NUMBER(i.e HXXXXXXNL BECOMES HXXXXXXNLT).



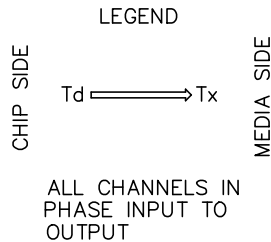
FINAL OUTLINE

© Copyright, 2022. Pulse Electronics Corp. All rights reserved. Pulse confidential & proprietary. (11/07/22)

PRODUCT DESCRIPTION	TLA DRAWING	PS DRAWING	SHEET	PART NO.	DATASHEET REV.
MDL,SIN,100D,1: 1,SM,TU	HMU1228NL-13	PS-2431.001-B	1 OF 4	HMU1228NL	H



SCHEMATIC

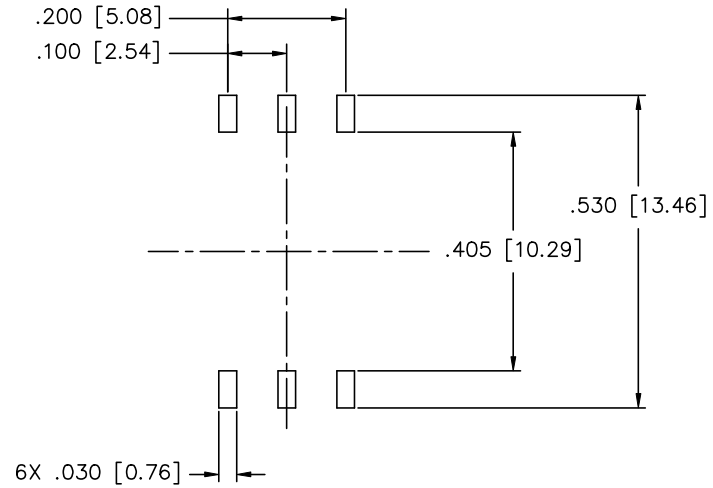
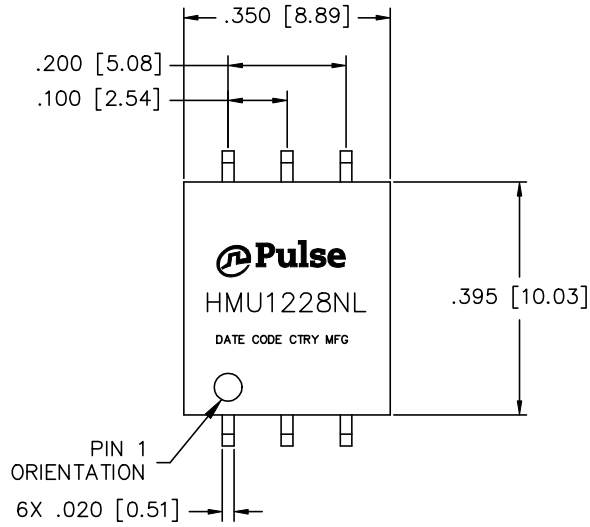


ELECTRICAL CHARACTERISTICS AT +25°C UNLESS OTHER SPECIFIED  
(FOR REFERENCE ONLY. USED FOR CUSTOMER INFORMATION.)

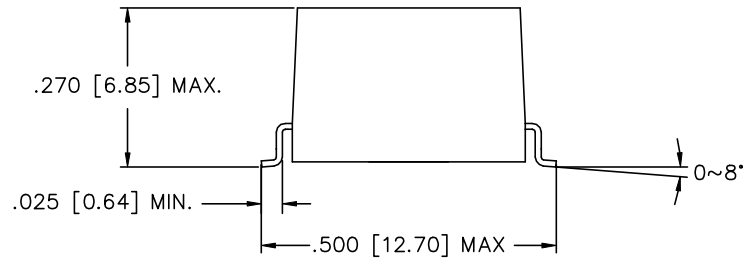
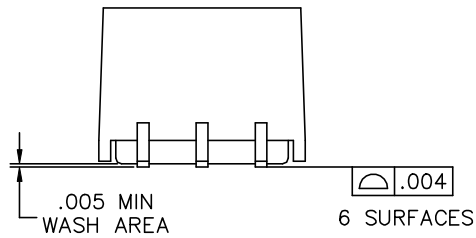
PARAMETER	SPECIFICATIONS		
QUALIFICATION	AEC-Q200		
INSULATION CATEGORY	BASIC INSULATION		
CREEPAGE DISTANCE	> 5mm		
CLEARANCE DISTANCE	> 3.2mm		
OPERATING TEMPERATURE	-40°C TO +125°C		
TURNS RATIO	1.00 ± 2%		
POLARITY	PER SCHEMATIC		
▽ INDUCTANCE (OCL) AT 100 kHz, 100 mV (-40°C TO +125°C)	150 uH MIN, 370 uH MAX		
▽ INSERTION LOSS	1-60 MHz -1.0 dB MAX	80 MHz -1.25 dB TYP	125 MHz -3.0 dB MAX
RETURN LOSS (Z OUT = 100 OHM ±1%)	4 MHz -16 dB MIN	30-80 MHz -14 + 20*LOG <sub>10</sub> (f/30 MHz) dB MIN	
▽ INPUT - OUTPUT ISOLATION	4300 VDC FOR 60 SECONDS		
WORKING VOLTAGE	500 VDC FOR 15 YEARS		

NOTE: 1. f IS FREQUENCY IN MHZ.  
2. "▽" IS SPECIAL CHARACTERISTIC.

PRODUCT DESCRIPTION	TLA DRAWING	PS DRAWING	SHEET	PART NO.	DATASHEET REV.
MDL,SIN,100D,1: 1,SM,TU	HMU1228NL-13	PS-2431.001-B	2 OF 4	HMU1228NL	H



SUGGESTED LAND PATTERN



DIMENSIONS ARE IN INCHES [MILLIMETERS] WITH THE FOLLOWING TOLERANCES: [MILLIMETERS] ARE FOR REFERENCE ONLY.

.XX= ±.01 [±0.25]

.XXX= ±.005 [±0.13]

© Copyright, 2022. Pulse Electronics Corp. All rights reserved. Pulse confidential & proprietary. (11/07/22)

PRODUCT DESCRIPTION	TLA DRAWING	PS DRAWING	SHEET	PART NO.	DATASHEET REV.
MDL,SIN,100D,1: 1,SM,TU	HMU1228NL-13	PS-2431.001-B	3 OF 4	HMU1228NL	H



CHANGE RECORD

REV	DESCRIPTION	DATE	APPROVED
G	–	09MAR18	BEZHOU
H	UPDATE THE ELECTRICAL TABLE	07NOV22	BEZHOU

© Copyright, 2022. Pulse Electronics Corp. All rights reserved. Pulse confidential & proprietary. (11/07/22)

PRODUCT DESCRIPTION	TLA DRAWING	PS DRAWING	SHEET	PART NO.	DATASHEET REV.
MDL,SIN,100D,1: 1,SM,TU	HMU1228NL-13	PS-2431.001-B	4 OF 4	HMU1228NL	H