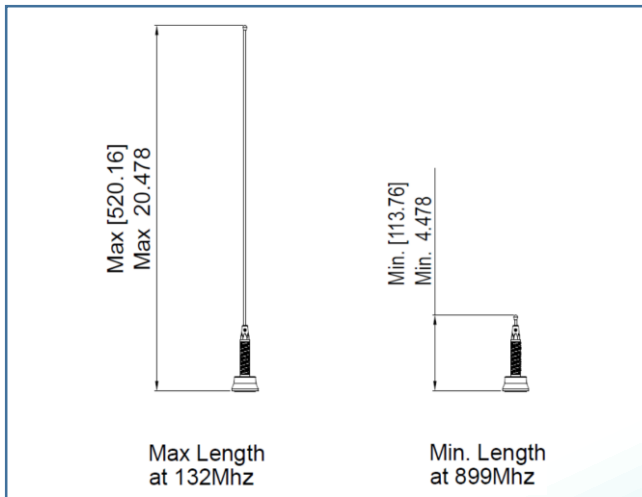
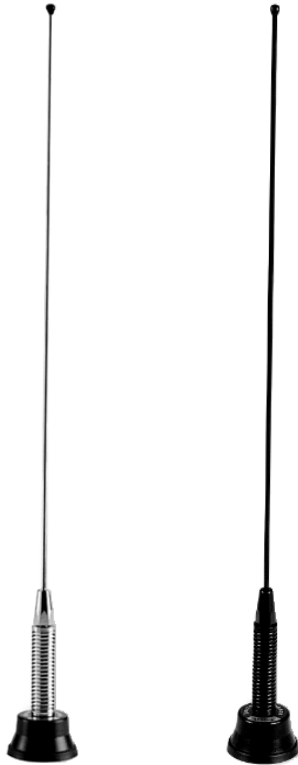


Description: Wideband 132-899 MHz
Qtr Wave Field Tunable

Series: Willow Field Tunable

PART NUMBERS: Bright: **NMOWBQCFT**
Black: **NMOWBQBFT**



All dimensions are in mm / inches

Features:

- Wide Bandwidth
 - >24 MHz Bandwidth at VHF
 - >100 MHz Bandwidth at UHF
 - >350 MHz bandwidth at 800 Mhz
- Field Tunable 132-899 MHz
- ¼ Wave
- Black or Bright Spring & Whip
- Centerless Ground Whip for Low-noise

Applications:

- VHF and UHF radios
- NMO mounting
- Rugged construction for demanding vehicular applications.

Issue: 1649

In the effort to improve our products, we reserve the right to make changes judged to be necessary.

CONFIDENTIAL AND PROPRIETARY INFORMATION

This document contains confidential and proprietary information of Pulse Electronics, Inc. (Pulse) and is protected by copyright, trade secret and other state and federal laws. Its receipt or possession does not convey any rights to reproduce, disclose its contents, or to manufacture, use or sell anything it may describe. Reproduction, disclosure or use without specific written authorization of Pulse is strictly forbidden.

For more information:

Pulse Worldwide Headquarters
12220 World Trade Drive
San Diego, CA 92128
USA
Tel: 1-858-674-8100

Pulse/Larsen Antennas
18110 SE 34th St Bldg 2 Suite 250
Vancouver, WA 98683
USA
Tel: 1-360-944-7551

Europe Headquarters
Pulse GmbH & Do, KG
Zeppelinstrasse 15
Herrenberg, Germany
Tel: 49 7032 7806 0

Pulse (Suzhou) Wireless Products Co, Inc.
99 Huo Ju Road(#29 Bldg,4th Phase
Suzhou New District
Jiangsu Province, Suzhou 215009 PR China
Tel: 86 512 6807 9998



Description: Wideband 132-899 MHz
Qtr Wave Field Tunable

Series: Willow Field Tunable

PART NUMBERS: Bright: **NMOWBQCFT**
Black: **NMOWBQBFT**

ELECTRICAL SPECIFICATIONS

| | |
|--------------------|---------------|
| Frequency | 132-899 MHz |
| Nominal Impedance | 50 Ω |
| VSWR | 2 : 1 Max |
| Gain | 0 dBd / 2 dBi |
| Polarization | Vertical |
| Power withstanding | 200 W |
| Connector type | NMO |

MECHANICAL SPECIFICATIONS

| | |
|----------------|-------------|
| Color | Black |
| Weight | 130 g |
| Wind-loading | 100 mph |
| Overall Length | 20.5 INCHES |
| Fixing system | NMO |

ENVIRONMENTAL SPECIFICATIONS

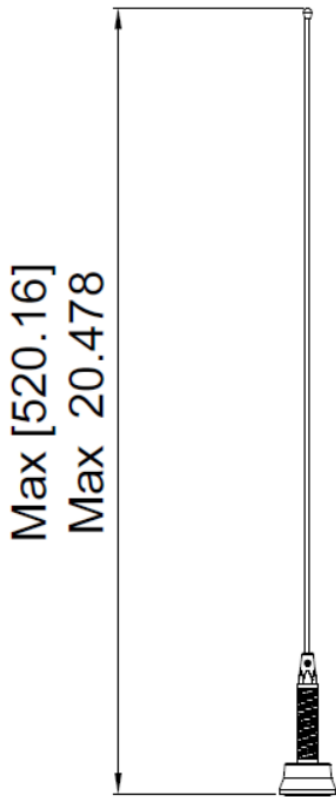
| | |
|-----------------------|---------------|
| Operating temperature | -40 to 85 ° C |
|-----------------------|---------------|

Description: Wideband 132-899 MHz
Qtr Wave Field Tunable

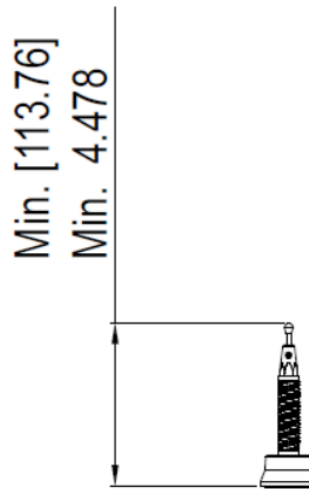
Series: Willow Field Tunable

PART NUMBERS: Bright: NMOWBQCFT
Black: NMOWBQBFT

MECHANICAL DRAWING



Max Length
at 132Mhz



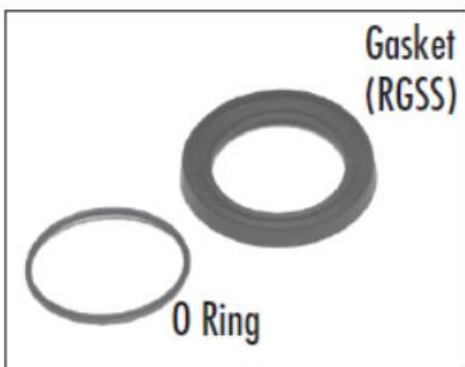
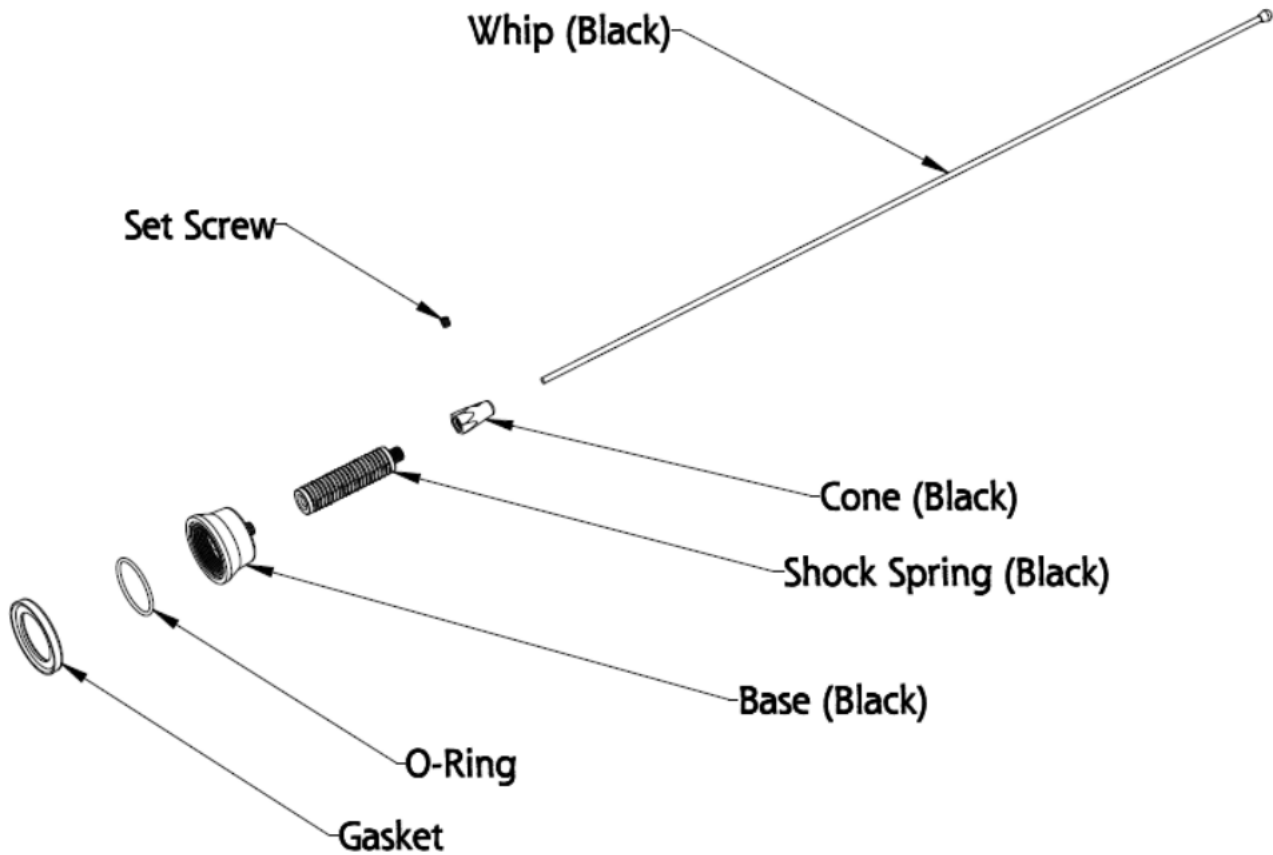
Min. Length
at 899Mhz

Description: Wideband 132-899 MHz
Qtr Wave Field Tunable

Series: Willow Field Tunable

PART NUMBERS: Bright: NMOWBQCFT
Black: NMOWBQBFT

OTHER SPECIFICATIONS



Note: Larsen NMO antennas come from the factory with both an O Ring and a SuperSeal Gasket (RGSS). Use one or the other for mounting the antenna – both cannot be used together. The RGSS is typically used for permanent mounts.

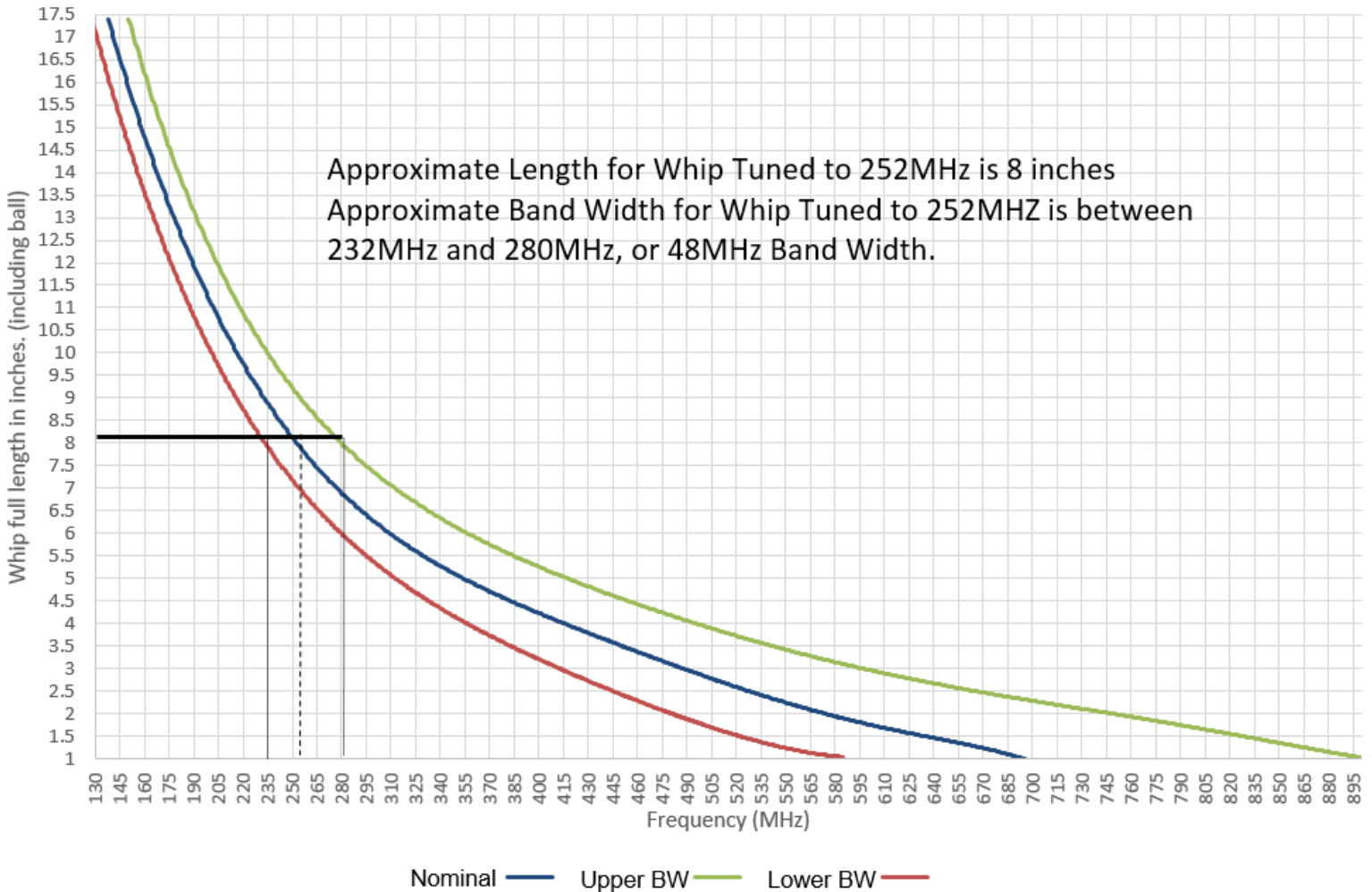
Description: Wideband 132-899 MHz
Qtr Wave Field Tunable

Series: Willow Field Tunable

PART NUMBERS: Bright: NMOWBQCFT
Black: NMOWBQBFT

CHARTS

Cutting Chart / Band Width Response



Issue: 1649

In the effort to improve our products, we reserve the right to make changes judged to be necessary.

CONFIDENTIAL AND PROPRIETARY INFORMATION

This document contains confidential and proprietary information of Pulse Electronics, Inc. (Pulse) and is protected by copyright, trade secret and other state and federal laws. Its receipt or possession does not convey any rights to reproduce, disclose its contents, or to manufacture, use or sell anything it may describe. Reproduction, disclosure or use without specific written authorization of Pulse is strictly forbidden.



Description: Wideband 132-899 MHz
Qtr Wave Field Tunable

Series: Willow Field Tunable

PART NUMBERS: Bright: **NMOWBQCFT**
Black: **NMOWBQBFT**

CHARTS

| Frequency MHz | | Whip Length |
|---------------|-----|-------------|
| min | max | inch |
| 131.6 | 155 | 17 |
| 132.8 | 156 | 16.75 |
| 134.6 | 152 | 16.5 |
| 137.9 | 163 | 16 |
| 140.9 | 166 | 15.5 |
| 145.9 | 173 | 15 |
| 150.5 | 177 | 14.5 |
| 157.6 | 184 | 14 |
| 161 | 187 | 13.5 |
| 165 | 190 | 13 |
| 171 | 197 | 12.5 |
| 177 | 203 | 12 |
| 182 | 206 | 11.5 |
| 189 | 218 | 11 |
| 194 | 225 | 10.5 |
| 200 | 233 | 10 |
| 210 | 248 | 9.5 |
| 215 | 254 | 9 |
| 225 | 269 | 8.5 |
| 237 | 284 | 8 |

| Frequency MHz | | Whip Length |
|---------------|-----|-------------|
| min | max | inch |
| 243 | 297 | 7.5 |
| 253 | 305 | 7 |
| 262 | 327 | 6.5 |
| 277 | 360 | 6 |
| 292 | 388 | 5.5 |
| 314 | 422 | 5 |
| 340 | 454 | 4.5 |
| 364 | 493 | 4 |
| 368 | 511 | 3.75 |
| 369 | 564 | 3.5 |
| 403 | 570 | 3.25 |
| 417 | 574 | 3 |
| 430 | 624 | 2.75 |
| 444 | 659 | 2.5 |
| 455 | 730 | 2.25 |
| 480 | 765 | 2 |
| 499 | 784 | 1.75 |
| 521 | 802 | 1.5 |
| 560 | 878 | 1.25 |
| 585 | 899 | 1 |