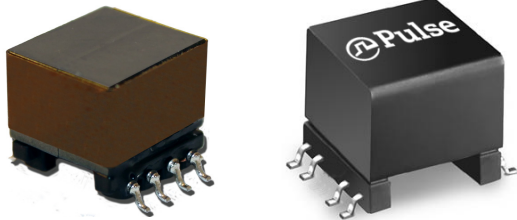


Wire Wound Transformers

EP 10 and EP 13 Platforms - SMT

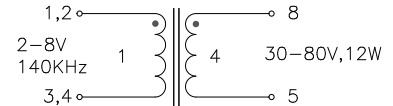


- ⚙️ **Designed to support Active Cell Balancer Circuits for high voltage battery stacks in conjunction with Analog Devices IC's LT8584 and LTC3300 .**
- ⚙️ **EP10 Platform Size: 15.24mm x 13.1mm x 11.45mm Max (PA5178NL, PA5179NL, PA5180NL)**
- ⚙️ **EP13 Platform Size: 17.7mm x 14.0mm x 12.7mm Max (PA5181NL)**
- ⚙️ **1500Vrms Isolation between primary and secondary windings**

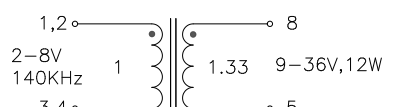
Electrical Specifications @ 25°C - Operating Temperature -40°C to +130°C

EP10 Platforms

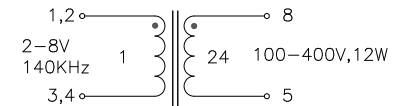
Model	Parameter	Value	Notes
PA5178NL	Pri. Inductance	4.0μH ± 10% ,0Adc 3.6uH Min, 7Adc	(1,2-3,4)
	Lk. Inductance	116μH MAX	(1,2-3,4) with (8-5) shorted
	DCR	12mΩ MAX	(1,2-3,4)
		500mΩ MAX	(8-5)
	Hi-Pot	1500Vrms	Pri-Sec
	KI Factor	393.3	
PA5179NL	Pri. Inductance	4.0μH ±10%,0Adc 3.6uH Min, 7Adc	(1,2-3,4)
	Lk. Inductance	190nH MAX	(1,2-3,4) with (8-5) shorted
	DCR	10mΩ MAX	(1,2-3,4)
		53mΩ MAX	(8-5)
	Hi-Pot	1500Vrms	Pri-Sec
	KI Factor	393.3	
PA5180NL	Pri. Inductance	4.0μH ± 10% ,0Adc 3.2uH Min, 7Adc	(1,2-3,4)
	Lk. Inductance	125nH MAX	(1,2-3,4) with (8-5) shorted
	DCR	17mΩ MAX	(1,2-3,4)
		8.1Ω MAX	(8-5)
	Hi-Pot	1500Vrms	Pri-Sec
	KI Factor	442.5	



EP10 Platforms



EP10 Platforms



EP10 Platforms

Wire Wound Transformers

EP 10 and EP 13 Platforms - SMT

Electrical Specifications @ 25°C - Operating Temperature -40°C to +130°C

EP13 Platforms

PA5181NL	Pri. Inductance	(1,2-9,10)	3.4uH ±15% 2.8uH Min at 10Adc	
	Lk. Inductance	(1,2-9,10) with (4,5-6,7) shorted	150nH MAX	
	DCR	(1,2-9,10)	9 mΩ MAX	
		(4,5-6,7)	11 mΩ MAX	
	Hi-Pot	Pri-Sec	1500 Vrms	
	K1 Factor	298.2		

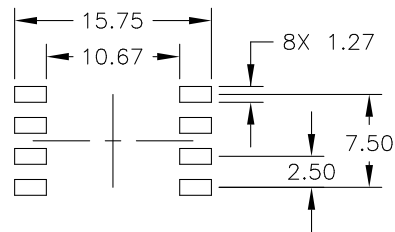
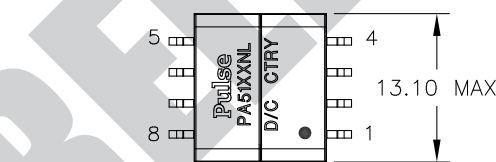
EP13 Platforms

Notes:

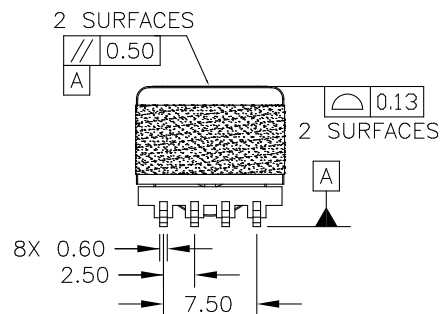
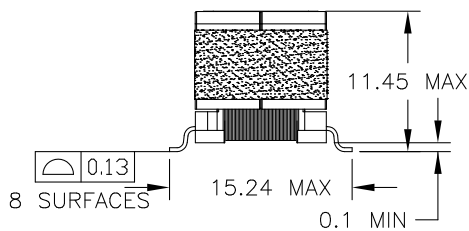
- The temperature of the component (ambient plus temperature rise) must be within the stated operating temperature range.
- The above transformers and inductors have been tested and approved by Pulse's power IC partners and are sited in the appropriate datasheet or evaluation board documentation at these companies. To determine which IC and IC partners are matched with the above Pulse part numbers please consult the IC Cross Reference on the Pulse website.
- For flyback topology applications, it is necessary to ensure that the transformer will not saturate in the application. The peak flux density (Bpk) should remain below 2700Gauss. To calculate the peak density, use the following formula:
 $B_{pk} \text{ (Gauss)} = K1_Factor * I_{pk} \text{ (A)}$
- In high volt-sec applications, it is important to calculate the core loss of the transformer. Approximate transformer core loss can be calculated as:
 $CoreLoss \text{ (W)} = 2.5E-14 * (Freq_kHz)^{1.63} * (\Delta B_Gauss)^{2.63}$
 where ΔB can be calculated as:
 For Flyback Topology: $\Delta B = K1_Factor * (A)$
- Optional Tape & Reel packaging can be ordered by adding a "T" suffix to the part number (i.e. PAXXXNL becomes PAXXXNLT). Pulse complies with industry standard tape and reel specification EIA481. The tape and reel for this product has a width (W=32mm), pitch (Po=24mm) and a depth (Ko=13.2mm).

Mechanical

EP10 Platform - PA5178NL, PA5179NL, PA5180NL



SUGGESTED LAND PATTERN



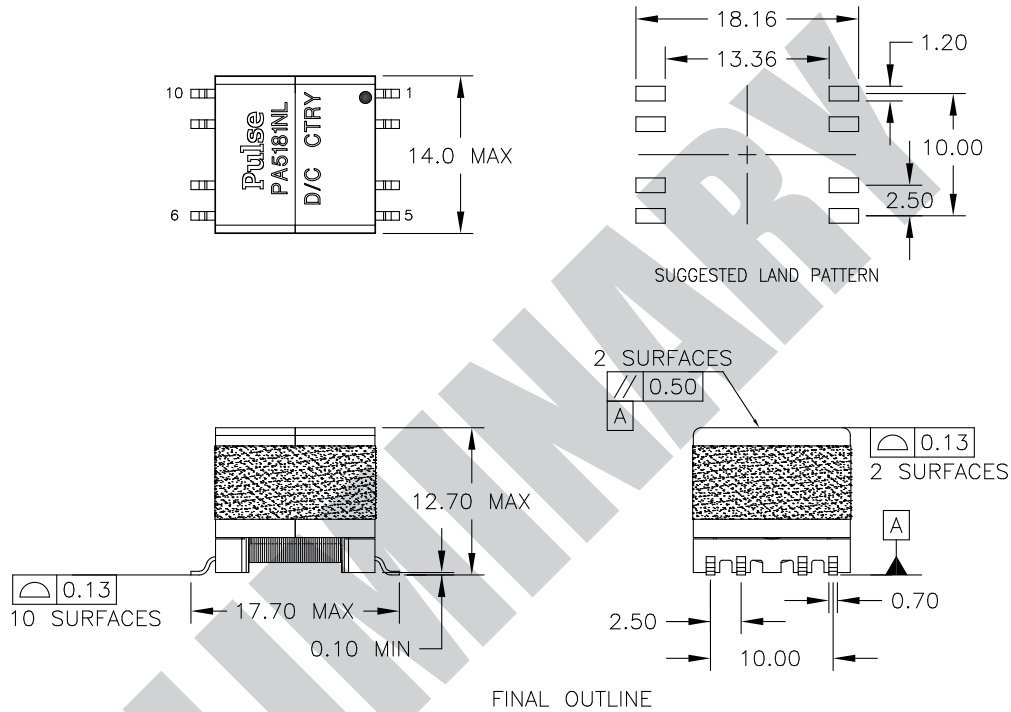
FINAL OUTLINE

Wire Wound Transformers

EP 10 and EP 13 Platforms - SMT

Mechanical

EP13 Platform - PA5181NL



For More Information

Pulse Worldwide Headquarters

15255 Innovation Drive Ste 100
San Diego, CA 92128
U.S.A.

Pulse Europe

Pulse Electronics GmbH
Am Rottland 12
58540 Meinerzhagen
Germany

Pulse China Headquarters

Pulse Electronics (ShenZhen) CO., LTD
D708, Shenzhen Academy of
Aerospace Technology,
The 10th Keji South Road,
Nanshan District, Shenzhen,
P.R. China 518057

Pulse North China

Room 2704/2705
Super Ocean Finance Ctr.
2067 Yan An Road West
Shanghai 200336
China

Pulse South Asia

3 Fraser Street 0428
DUO Tower
Singapore 189352

Pulse North Asia

1F., No.111 Xiyuan Road
Zhongli District
Taoyuan City 32057
Taiwan (R.O.C)

Tel: 858 674 8100
Fax: 858 674 8262

Tel: 49 2354 777 100
Fax: 49 2354 777 168

Tel: 86 755 33966678
Fax: 86 755 33966700

Tel: 86 21 62787060
Fax: 86 2162786973

Tel: 65 6287 8998
Fax: 65 6280 0080

Tel: 886 3 4356768
Fax: 886 3 4356820

Performance warranty of products offered on this data sheet is limited to the parameters specified. Data is subject to change without notice. Other brand and product names mentioned herein may be trademarks or registered trademarks of their respective owners. © Copyright, 2019. Pulse Electronics, Inc. All rights reserved.