



The BEBE Series is designed specifically to enhance the performance of both PFM and PWM applications. The Rac value at light load and the RDC value at heavy load are both exceptional. Furthermore, the saturated current performance is also optimal, helping to reduce the ripple current and enhance the efficiency.

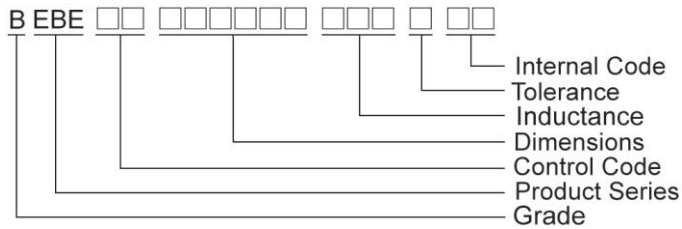
Features

- RoHS, Halogen Free and REACH Compliance
- High performance (Isat) realized by metal dust core.
- Low coil resistance with large currents.

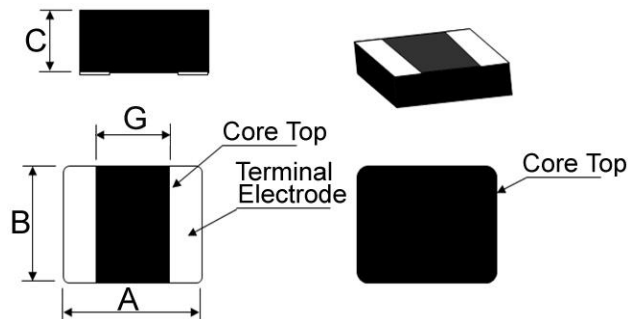
Applications

- Smartphones, wearable devices, Pad, Notebook

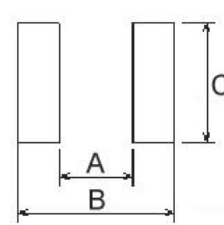
Product Identification



Shape and Dimensions



Recommended Pattern



BEBE Series

Dimensions in mm

TYPE	A	B	C	G
1412F5	1.4±0.2	1.2±0.2	0.65Max	0.53
141208	1.4±0.2	1.2±0.2	0.8Max	0.53
201208	2.0±0.2	1.2±0.2	0.8Max	0.6
201210	2.0±0.2	1.2±0.2	0.8Max	0.6
201608	2.0±0.2	1.6±0.2	0.8Max	0.6
201610	2.0±0.2	1.6±0.2	1.0Max	0.6
252010	2.5±0.2	2.0±0.2	1.0Max	0.7
252012	2.5±0.2	2.0±0.2	1.2Max	0.7
322508	3.2±0.2	2.5±0.2	0.8Max	0.9
322512	3.2±0.2	2.5±0.2	1.2Max	0.9
303012	3.1±0.2	2.9±0.2	1.2Max	1.1

Dimensions in mm

TYPE	A	B	C
1412F5	0.5	1.6	1.4
141208	0.5	1.6	1.4
201208	0.5	2.2	1.4
201210	0.5	2.2	1.4
201608	0.7	2.3	1.8
201610	0.7	2.3	1.8
252010	0.6	2.7	2.2
252012	0.6	2.7	2.2
322508	0.8	3.7	2.8
322512	0.8	3.7	2.8
303012	1.2	3.4	3.2

BEBE001412 Series Electrical Characteristics

Part Number	Inductance (uH)	Tolerance (±%)	Test Frequency (MHz)	I _{rms} (A) Max(Typ)	I _{sat} (A) Max(Typ)	RDC(mΩ) Max(Typ)
BEBE001412F5R33MMA	0.33	20	1MHz, 1V	3.0(3.3)	5.0(5.5)	32(26)
BEBE001412F5R47MMA	0.47	20	1MHz, 1V	2.6(2.9)	3.0(3.3)	42(35)
BEBE00141208R24MMA	0.24	20	1MHz, 1V	5.3(5.8)	6.0(6.5)	20(18)
BEBE00141208R33MMA	0.33	20	1MHz, 1V	3.6(4.0)	4.5(5.0)	25(23)
BEBE00141208R47MMA	0.47	20	1MHz, 1V	3.0(3.3)	4.0(4.5)	30(28)
BEBE001412081R0MMA	1.00	20	1MHz, 1V	2.0(2.3)	2.5(2.8)	77(70)
BEBE00141208R33MMS	0.33	20	1MHz, 1V	3.6(4.0)	5.5(5.7)	25(23)
BEBE00141208R47MMS	0.47	20	1MHz, 1V	3.0(3.3)	4.8(5.0)	30(28)

BEBE002012 Series Electrical Characteristics

Part Number	Inductance (uH)	Tolerance (±%)	Test Frequency (MHz)	Irms(A) Max(Typ)	Isat(A) Max(Typ)	RDC(mΩ) Max(Typ)
BEBE00201208R11MMA	0.11	20	1MHz, 1V	6.5(7.0)	8.6(9.1)	12(10)
BEBE00201208R24MMA	0.24	20	1MHz, 1V	6.0(6.5)	7.9(8.3)	20(17)
BEBE00201208R33MMA	0.33	20	1MHz, 1V	4.7(5.3)	6.0(6.5)	20(18)
BEBE00201208R47MMA	0.47	20	1MHz, 1V	3.7(4.2)	4.3(4.8)	25(23)
BEBE002012101R0MMA	1.00	20	1MHz, 1V	3.1(3.5)	3.3(3.8)	50(42)
BEBE00201210R33MMA	0.33	20	1MHz, 1V	4.7(5.3)	6.0(6.5)	20(18)
BEBE00201210R47MMA	0.47	20	1MHz, 1V	4.2(4.7)	5.0(5.5)	24(21)

BEBE002016 Series Electrical Characteristics

Part Number	Inductance (uH)	Tolerance (±%)	Test Frequency (MHz)	Irms(A) Max(Typ)	Isat(A) Max(Typ)	RDC(mΩ) Max(Typ)
BEBE00201608R47MMA	0.47	20	1MHz, 1V	4.5(4.9)	4.7(5.2)	24(21)
BEBE002016081R0MMA	1.00	20	1MHz, 1V	4.0(4.5)	3.6(4.1)	35 (30)
BEBE002016082R2MMA	2.20	20	1MHz, 1V	2.3(2.6)	2.7(3.0)	90(80)
BEBE00201610R47MMA	0.47	20	1MHz, 1V	4.5(5.0)	5.7(6.1)	20(18)
BEBE002016101R0MMA	1.00	20	1MHz, 1V	4.1(4.5)	4.2(4.6)	43(35)

BEBE002520 Series Electrical Characteristics

Part Number	Inductance (uH)	Tolerance (±%)	Test Frequency (MHz)	Irms(A) Max(Typ)	Isat(A) Max(Typ)	RDC(mΩ) Max(Typ)
BEBE00252010R47MMA	0.47	20	1MHz, 1V	5.9(6.5)	6.5(7.2)	15.0(13.0)
BEBE00252010R68MMA	0.68	20	1MHz, 1V	5.0(5.5)	5.5(6.0)	18.5(16.0)
BEBE002520101R0MMA	1.00	20	1MHz, 1V	5.2(5.7)	5.0(5.5)	25.0(18.0)
BEBE002520102R2MMA	2.20	20	1MHz, 1V	2.6(2.9)	2.5(3.0)	77.0(70.0)
BEBE00252012R22MMB	0.22	20	1MHz, 1V	8.0(8.5)	9.0(9.5)	13.0(10.0)
BEBE00252012R47MMB	0.47	20	1MHz, 1V	5.0(5.5)	6.0(6.5)	18.0(15.0)
BEBE002520121R0MMB	1.00	20	1MHz, 1V	4.2(5.0)	4.3(4.9)	32.0(27.0)

BEBE003225 Series Electrical Characteristics

Part Number	Inductance (uH)	Tolerance (±%)	Test Frequency (MHz)	Irms(A) Max(Typ)	Isat(A) Max(Typ)	RDC(mΩ) Max(Typ)
BEBEBZ32250880NMMA	0.08	20	1MHz, 1V	8.0(9.0)	14.5(15.5)	4.2(3.9)
BEBEBZ322510R22MMA	0.22	20	1MHz, 1V	7.0(7.5)	10.0(11.0)	12.5(10.5)

BEBE003030 Series Electrical Characteristics

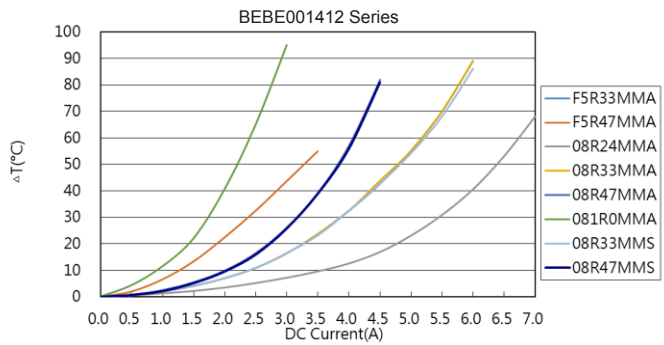
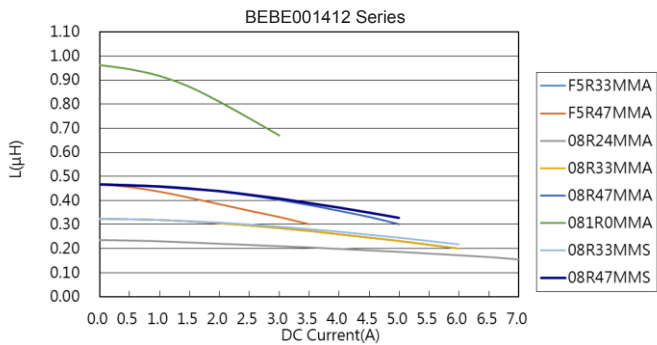
Part Number	Inductance (uH)	Tolerance (±%)	Test Frequency (MHz)	Irms(A) Max(Typ)	Isat(A) Max(Typ)	RDC(mΩ) Max(Typ)
BEBE003030121R0MMA	1.0	20	1MHz, 1V	5.3(5.8)	6.3(6.8)	30.0(27.0)

Note: When ordering, please specify tolerance code. Tolerance: M=±20%

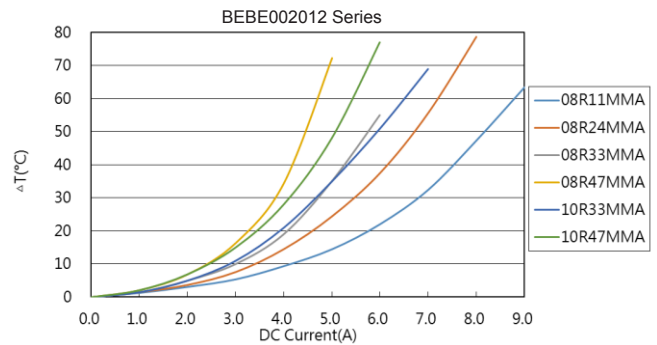
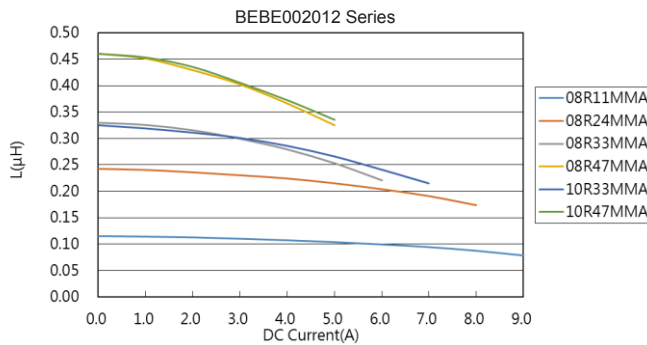
- Operating temperature range –40°C ~125°C (Including self - temperature rise)
- Isat for Inductance drop 30% from its value without current
- Irms for a 40°C temperature rise from 25°C ambient with current
- Rated current : Isat or Irms, whichever is smaller
- Absolute maximum voltage 15VDC(Based on test method, it may not the same under different application,it is recommended to verify first.)
- Measure Equipment :
 - L : Agilent E4991/HP4286A+16197A/WP6500P (or equivalent), 1MHz 1V
 - RDC : CHEN HWA502BC/HP4338B (or equivalent)
 - Isat : Agilent E4980A+HP42841A (or equivalent)
 - Irms : Agilent 6641 SYSTEM DC POWER SUPPLY (or equivalent)

Graph:

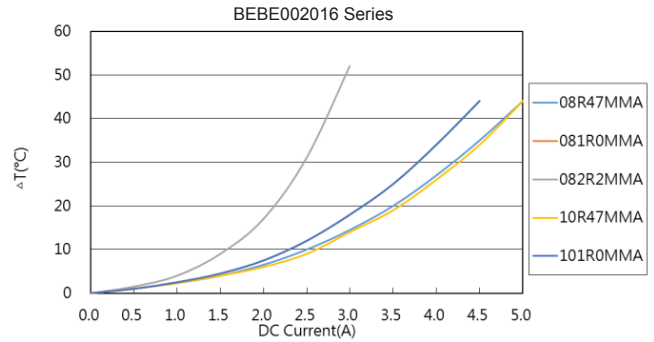
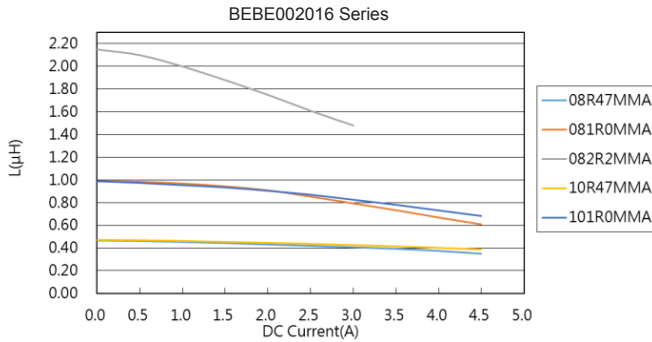
● BEBE001412 Series



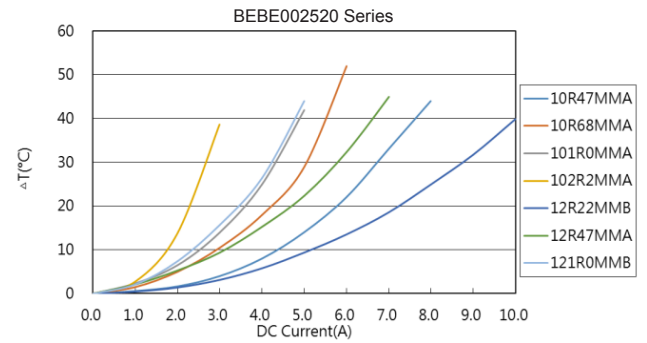
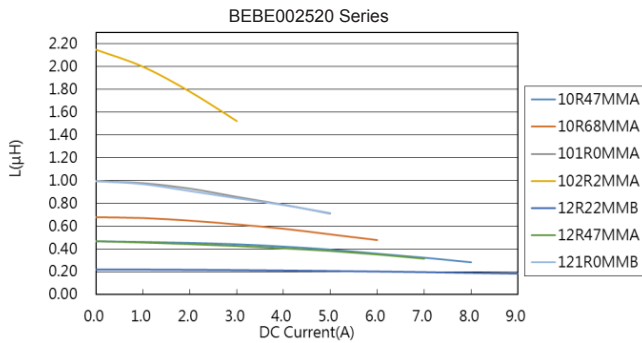
● BEBE002012 Series



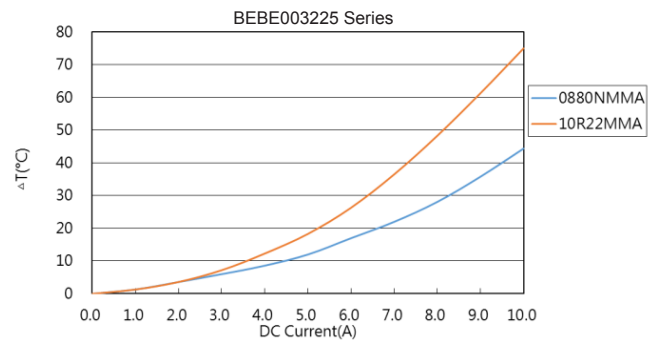
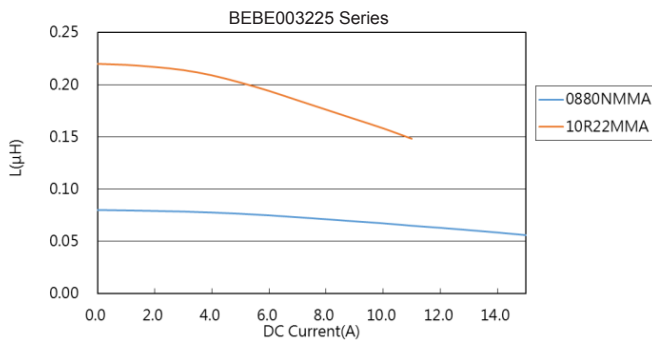
● BEBE002016 Series



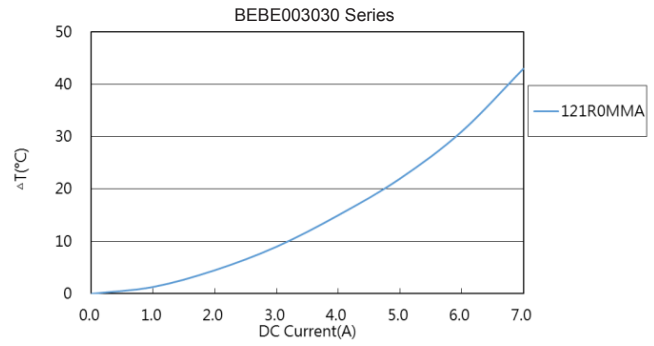
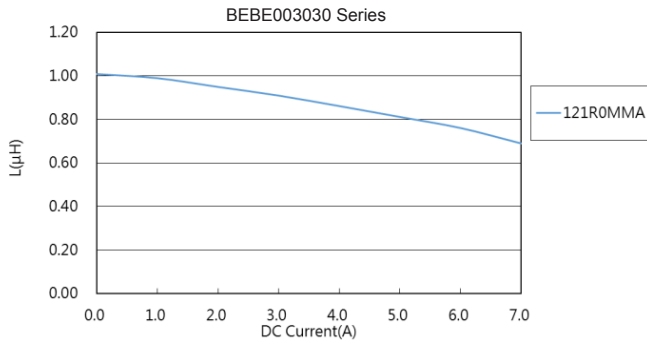
● BEBE002520 Series



● BEBE003225 Series

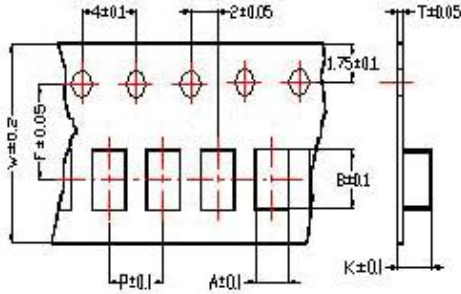


- BEBE003030 Series

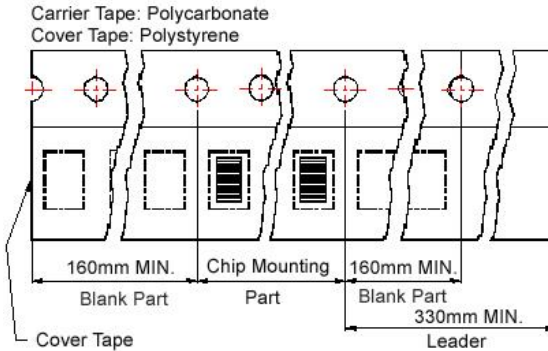


Packaging Specifications

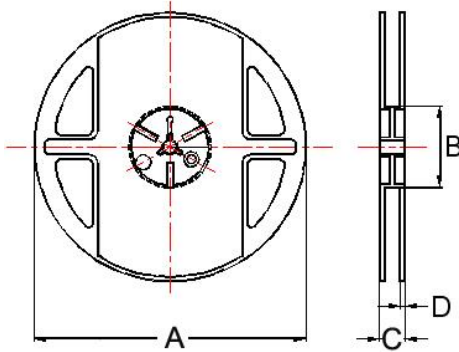
Tape Dimensions



Tape Material



Reel Dimensions



Dimensions in mm

TYPE	Tape Dimensions								Reel Dimensions				Quantity PCS / REEL
	A	B	T	W	P	F	K	A	B	C	D		
1412F5	1.50	1.70	0.22	8	4	3.5	0.80	178	60	12	1.5	3000	
141208	1.50	1.70	0.22	8	4	3.5	0.95	178	60	12	1.5	3000	
201208	1.50	2.30	0.22	8	4	3.5	0.95	178	60	12	1.5	3000	
201210	1.50	2.30	0.22	8	4	3.5	1.15	178	60	12	1.5	3000	
201608	1.90	2.30	0.22	8	4	3.5	0.95	178	60	12	1.5	3000	
201610	1.90	2.30	0.22	8	4	3.5	1.15	178	60	12	1.5	3000	
252010	2.30	2.80	0.25	8	4	3.5	1.15	178	60	12	1.5	3000	
252012	2.30	2.80	0.25	8	4	3.5	1.35	178	60	12	1.5	3000	
322508	2.80	3.50	0.25	8	4	3.5	0.95	178	60	12	1.5	3000	
322512	2.80	3.50	0.25	8	4	3.5	1.35	178	60	12	1.5	2000	
303012	3.35	3.50	0.25	8	4	3.5	1.35	178	60	12	1.5	2000	

For More Information:

Americas - prodinfo_power_americas@yageo.com | Europe - prodinfo_power_emea@yageo.com | Asia - prodinfo_power_asia@yageo.com

Performance warranty of products offered on this data sheet is limited to the parameters specified. Data is subject to change without notice. Other brand and product names mentioned herein may be trademarks or registered trademarks of their respective owners. © Copyright, 2022. Pulse Electronics, Inc. All rights reserved.